

ALL THIS BY HAND

Leafy Lace Scarf



Size

One size

Measurements

6.5 by 54 inches

Materials

Plymouth Baby Alpaca DK (125 yd/50g), 2 skeins
US 8/5 mm needles, circular or straight
Stitch holder

Gauge

20 sts and 26 rows / 4 inches, but not critical

Directions

K2tog: knit 2 sts together

Ssk: slip, slip, knit (note – this can also be worked as k2togtbl, knit 2 together through the back loop)

3dec = Sl2tog kwise, k1, pssso: slip two stitches together knitwise (as if knitting two together), knit 1, pass slipped stitches over together – 2 sts decreased

CO 25 sts **very loosely**. Purl 1 row. Begin leaf lace pattern as follows:

Row 1 (RS): K1, (yo, k2, 3dec, k2, yo, k1) 3 times.

Row 2 and all WS rows: Purl all sts.

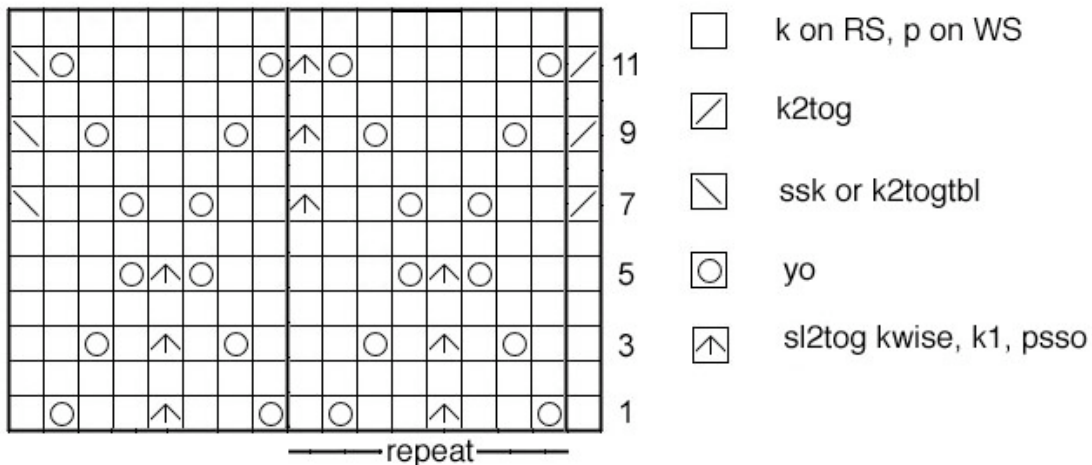
Row 3: K1, (k1, yo, k1, 3dec, k1, yo, k2) 3 times.

Row 5: K1, (k2, yo, 3dec, yo, k3) 3 times.

Row 7: K2tog, (k2, yo, k1, yo, k2, 3dec) 2 times, k2, yo, k1, yo, k2, ssk.

Row 9: K2tog (k1, yo, k3, yo, k1, 3 dec) 2 times, k1, yo, k3, yo, k1, ssk.

Row 11: K2tog (yo, k5, yo, 3dec) 2 times, yo, k5, yo, ssk.



Work until almost out of yarn, ending having worked row 5 or row 11 of pattern. Place all sts on holder. Make a second half the same, being sure to end on the same row of the pattern as the first half. Return held sts to second needle or other half of circular needle. With knit sides up, join halves using Kitchner stitch. Let scarf soak in a sink of cold water until thoroughly wet. Gently remove it and place on a bath towel. Roll the towel up and press to remove most of the water. Pin the scarf out on a blocking board or dry towel, stretching the lace enough to give it definition, pulling edge points into scallops as shown and pulling out leaf points at both ends. Weave in ends.